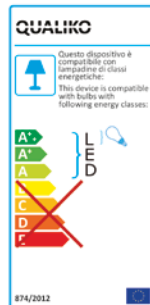
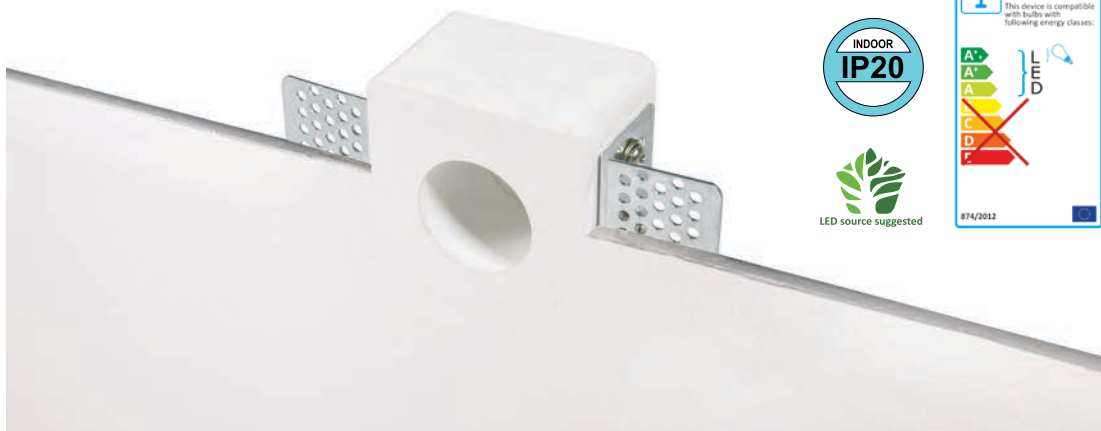


QUALIKO
PROFESSIONAL LIGHT COMPONENTS

2020



Incassi Gypsolyte • Gypsolyte fixtures



Type	Part n°	Dimensions mm	Standard	Colour	mm	Packing box dimensions (mm)	Packing box (kg)
SNAP Q1B	B9286G035Q1B	60x60x37h	MR8	White	63x63	100x105x110	0,25

Verdere pagina 184 per i kit che includono la lampadina LED - See page 184 for kits including LED lamp

Incasso in Gypsolyte per controsoffitti (per moduli LED)

- Incasso invisibile per controsoffitti
- Dopo aver rasato a gesso il controsoffitto, l'incasso risulta parte integrante del soffitto stesso e può essere finteggiato
- Apertura per installazione 63x63 mm.
- Adatto a moduli LED standard MR8 (con adattatore BAT30X23500B)

Gypsolyte fitting for counter ceiling (for LED modules)

- Invisible fitting for counter ceilings
- Once the counter ceiling is finished with smoothing plaster, the fitting is almost invisible and can be painted together with the ceiling
- Installation hole mm 63x63
- Suitable for standard MR8 LED modules (with adapter BAT30X23500B)

Einbaustrahler aus Gypsolyte für Unterdecken (für Led-Modulen geeignet)

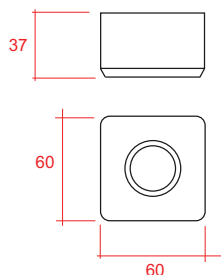
- Unsichtbare Einbaustrahler für Unterdecken
- Sobald die Unterdecke durch Gips glatt gemacht ist, wird der Einbaustrahler fast unsichtbar und kann zusammen mit der Unterdecke gemalt werden
- Montageöffnung 63x63 mm.
- Für Standard MR8 LED-Module geeignet (mit Adaptator BAT30X23500B)

Encastrable en Gypsolyte pour plafond (pour modules à LED)

- Encastrable invisible pour faux plafond
- Après avoir lissé le faux-plafond, le boîtier encastrable devient partie intégrante du faux-plafond lui même et peut être peint
- Ouverture dans le plafond pour l'installation: 63x63 mm.
- Adapté aux modules LED MR8 standard (avec adaptateur BAT30X23500B)

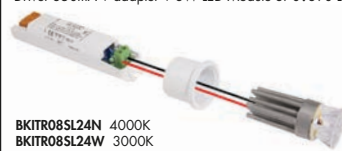
Cazoleta para falso techo (para módulos de LED) in Gypsolyte

- Cazoleta para falso techo Gypsolyte (para módulos de LED)
- Cazoleta invisible para falsos techos
- Una vez terminado el falso techo con yeso la carcasa es casi invisible y puede ser pintado junto con el techo
- Medidas del orificio para la instalación 63x63 mm.
- Aproprioado para módulos estándar de LED MR8 (con adaptador BAT30X23500B)



Optional: adapter BAT30X23500B

Optional Kit:
Driver 350mA + adapter + 3W LED Module 370±390 Lm



BKITR085L24N 4000K
BKITR085L24W 3000K