

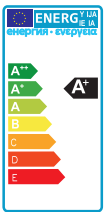
QUALIKO

PROFESSIONAL LIGHT COMPONENTS

2018

ALASKA EVO Lampioni LED • LED street lights

QUALIKO



| Type | Part N° | Dimensions (mm) | Weight kg | Input (V) | Flux (lm) | °Kelvin | Power (W max) | Surge protection | Pole Ø (mm) | Packing box dimensions (mm) | Packing box Weight (kg) |
|---------------|--------------|--------------------|--------------|--------------|--------------|---------|------------------|---------------------|----------------|--------------------------------|----------------------------|
| ALASKA EVO 40 | BLT107EVO40G | 414X125x90h | 1,9 | 100÷240 | 5400 Lm | 4000° | 40 | 15KV | 45÷67 | 460x230x140 | 2,3 |

Disponibili files ottici Eulumdat (.ldt) e IESNA (.ies) • Available files: Eulumdat (.ldt) and IESNA (.ies) • Eulumdat (.ldt) und IESNA (.ies) files verfügbar
Documentation disponible: Eulumdat (.ldt) et IESNA (.ies) • Disponibles archives: Eulumdat (.ldt) e IESNA (.ies)

LED street light

- Lampione stradale a Led asse orizzontale
- Power factor >0,95
- Involucro IP67 verniciato con epossidica grigia
- Temperatura ambiente operativa -40°C ÷ +50°C

LED street light

- Led street light horizontal axis
- Power factor >0,95- IP67 case and epoxy grey painting
- Working range: -40°C ÷ +50°C

Street light LED

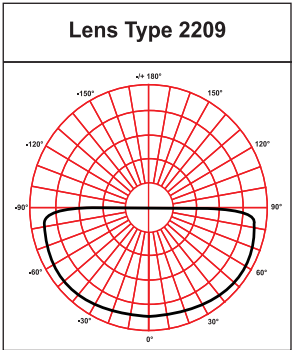
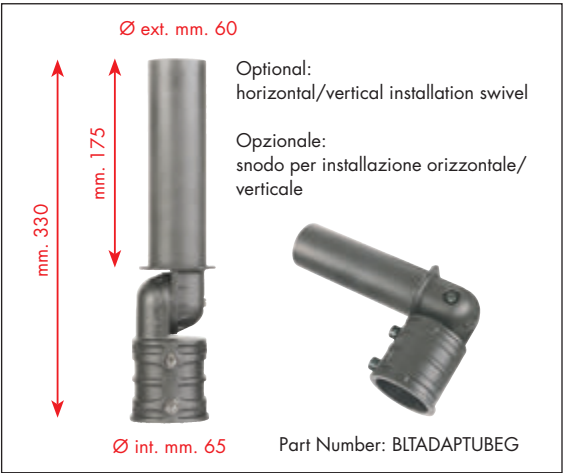
- Led Straßenleuchte auf horizontale Achse
- Leistungsfaktor: >0,95
- Graue Epoxy-Lackierung – IP67
- Betriebstemperatur: -40°C ÷ +50°C

LED street light

- Lampadaire à Led axe horizontal
- Facteur de puissance: >0,95
- Finition avec du vernis epoxy gris – IP67
- Température de fonctionnement: -40°C ÷ +50°C

LED street light

- Alumbrado public Led, eje horizontal
- Factor de potencia: >0,95
- Caja IP67 y pintura de epoxy gris
- Temperatura de funcionamiento: -40°C ÷ +50°C



TEXAS EVO

QUALIKO
PROFESSIONAL LIGHT COMPONENTS srl



Lampioni LED • LED Street Lights

TEXAS EVO Lampioni LED • LED street lights

QUALIKO



CE EMC IP67 RoHS

| Type | Part N° | Dimensions (mm) | Weight kg | Input (V) | Flux (lm) | °Kelvin | Power (W max) | Surge protection | Pole Ø (mm) | Packing box dimensions (mm) | Packing box Weight (kg) |
|--------------|---------------------|-----------------|-----------|-----------|-----------|---------|---------------|------------------|-------------|-----------------------------|-------------------------|
| TEXAS EVO 60 | BLT111EVO40G | 435X190x80h | 2,7 | 100÷240 | 6200 Lm | 4000° | 60 | 15KV | 57÷63 | 490x260x150 | 3,30 |

Disponibili files ottici Eulumdat (.ldt) e IESNA (.ies) •
 Available files: Eulumdat (.ldt) and IESNA (.ies) •
 Eulumdat (.ldt) und IESNA (.ies) files verfügbar
 Documentation disponible: Eulumdat (.ldt) et IESNA (.ies) •
 Disponibles archives: Eulumdat (.ldt) e IESNA (.ies)

LED street light

- Lampione stradale a Led asse orizzontale
- Power factor >0,95
- Involucro IP67 verniciato con epossidica grigia
- Temperatura ambiente operativa -40°C ÷ +50°C

LED street light

- Led street light horizontal axis
- Power factor >0,95- IP67 case and epoxy grey painting
- Working range: -40°C ÷ +50°C

Street light LED

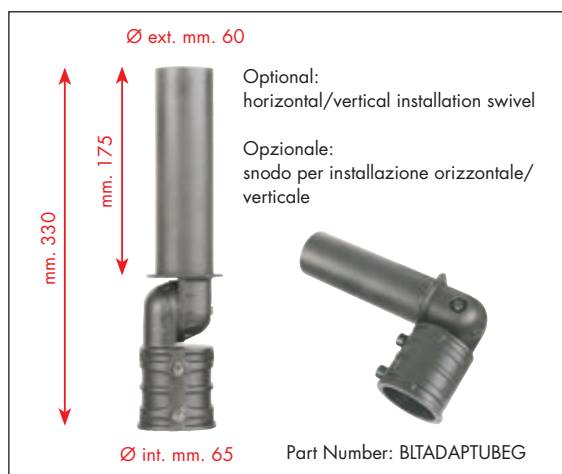
- Led Straßenleuchte auf horizontale Achse
- Leistungsfaktor: >0,95
- Graue Epoxy-Lackierung – IP67
- Betriebstemperatur: -40°C ÷ +50°C

LED street light

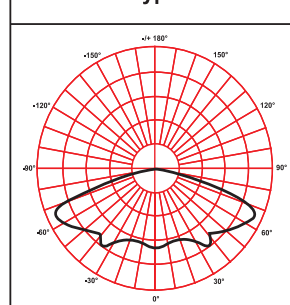
- Lampadaire à Led axe horizontal
- Facteur de puissance: >0,95
- Finition avec du vernis epoxy gris – IP67
- Température de fonctionnement: -40°C ÷ +50°C

LED street light

- Alumbrado public Led, eje horizontal
- Factor de potencia: >0,95
- Caja IP67 y pintura de epoxy gris
- Temperatura de funcionamiento: -40°C ÷ +50°C



Lens Type 2322

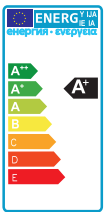
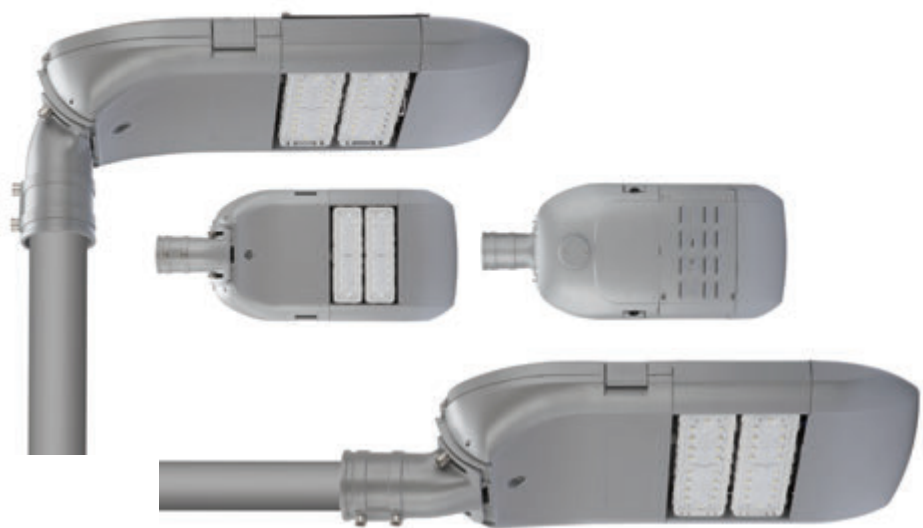


FLORIDA EVO

QUALIKO
PROFESSIONAL LIGHT COMPONENTS srl



Lampioni LED • LED Street Lights



| Type | Part N° | Dimensions (mm) | Weight kg | Input (V) | Flux (lm) | °Kelvin | Power (W max) | Surge protection | Pole Ø (mm) | Packing box dimensions (mm) | Packing box Weight (kg) |
|-----------------|--------------|-----------------|-----------|-----------|-----------|---------|---------------|------------------|-------------|-----------------------------|-------------------------|
| FLORIDA EVO 100 | BLT100EVO40G | 740X330x160h | 8,4 | 100÷240 | 11000 Lm | 4000° | 100 | 15KV | 68±8 | 830x410x230 | 9,8 |
| FLORIDA EVO 150 | BLT150EVO40G | 820X330x160h | 9,6 | 100÷240 | 16500 Lm | 4000° | 150 | 15KV | 68±8 | 910x410x230 | 11,2 |
| FLORIDA EVO 200 | BLT200EVO40G | 900X330x160h | 10,8 | 100÷240 | 21000 Lm | 4000° | 200 | 15KV | 68±8 | 990x410x230 | 12,6 |

Disponibili files ottici Eulumdat (.ldt) e IESNA (.ies) • Available files: Eulumdat (.ldt) and IESNA (.ies) • Eulumdat (.ldt) und IESNA (.ies) files verfügbar
Documentation disponible: Eulumdat (.ldt) et IESNA (.ies) • Disponibles archives: Eulumdat (.ldt) e IESNA (.ies)

LED street light

- Lampione stradale a Led asse orientabile
- Alimentazione universale 100÷240V-AC 50÷60Hz
- Power factor >0,95
- Involucro IP67 verniciato con epossidica grigia
- Temperatura ambiente operativa -40°C ÷ +50°C

LED street light

- Led street light adjustable axis
- Universal input: 100÷240V AC 50÷60Hz
- Power factor >0,95- IP67 case and epoxy grey painting
- Working range: -40°C ÷ +50°C

Street light LED

- Led Straßenleuchte auf verstellbarer Achse
- Universale Eingangsspannung: 100÷240V AC 50÷60Hz
- Leistungsfaktor: >0,95
- Graue Epoxy-Lackierung – IP67
- Betriebstemperatur: -40°C ÷ +50°C

LED street light

- Lampadaire à Led axe réglable
- Alimentation universelle: 100÷240V AC 50÷60Hz
- Facteur de puissance: >0,95
- Finition avec du vernis epoxy gris – IP67
- Température de fonctionnement: -40°C ÷ +50°C

LED street light

- Alumbrado public Led, inclinación ajustable
- Entrada universal: 100÷240V AC 50÷60Hz
- Factor de potencia: >0,95
- Caja IP67 y pintura de epoxy gris
- Temperatura de funcionamiento: -40°C ÷ +50°C

